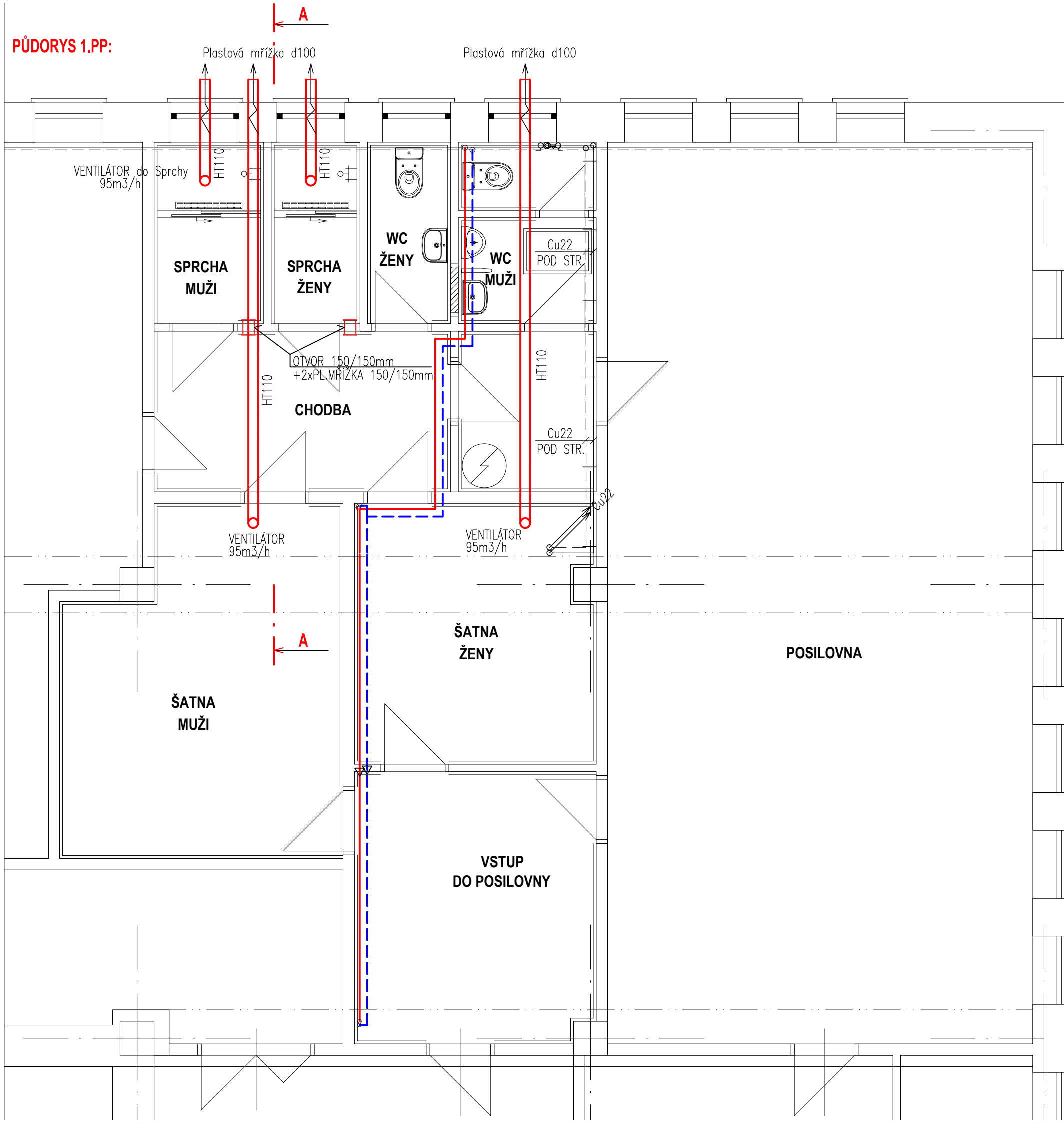
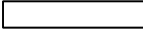








PŮDORYS 1.PP:



LEGENDA STAVEBNÍCH HMOT :

-  STÁVAJÍCÍ KONSTRUKCE
-  NOVÉ KONSTRUKCE
-  PŘÍČKY VYZDĚNÉ Z YTONGU
-  VYBOURANÉ KONSTRUKCE
-  OBKLAD DO VÝŠKY 1.800 mm, VE SPRCHÁCH DO VÝŠKY 2.300 mm
-  OLEJOVÝ NÁTĚR STEN DO VÝŠKY 1.500 mm

LEGENDA VZT :

-  - VZT potrubí HT110+IZOLACE TUBEX 114/15mm
-  - spád potrubí 1% do venkovního prostoru

ŘEZ A-A :

